

PH

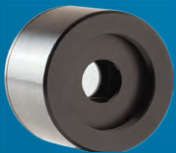
600 pW to 750 mW, Si and Ge Sensors



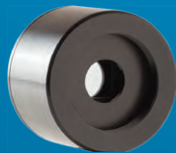
KEY FEATURES

- 1 Large Apertures**
10 mm Ø for the Silicon sensors
- 2 3 Versions**
 - Silicon: 320 - 1100 nm, up to 750 mW
 - Silicon-UV: 210 - 1080 nm, up to 30 mW
 - Germanium: 800 - 1650 nm, up to 500 mW
- 3 Choice of Attenuators**
 - OD1: 10 % Transmission
 - OD2: 1 % Transmission
- 4 Precise Calibration**
Wavelength selection in 1 nm steps
- 5 Smart Interface**
Containing all the calibration data

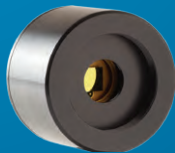
AVAILABLE MODELS



PH100-Si
(10 mm - Silicon)

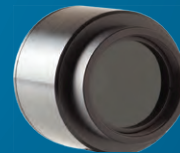


PH100-Si^{UV}
(10 mm - UV-Silicon)



PH20-Ge
(5 mm - Germanium)

OD1 / OD2 ATTENUATORS



PH Series Detector
With OD1/OD2 Attenuator

OD1/OD2 Attenuators sold in option. When bought together, the detector is calibrated with and without the attenuator.

ACCESSORIES



Stand with Delrin Post
(Model Number: 200428)



Fiber Adaptors & Connectors
(FC, SC, ST and SMA)



Pelican Carrying Case

SEE ALSO

CALIBRATION	6
TECHNICAL DRAWINGS	102
COMPATIBLE MONITORS	
MAESTRO	18
UNO	24
P-LINK	28
M-LINK	30
LIST OF ALL ACCESSORIES	174

PH

SPECIFICATIONS



*Also traceable to NRC-CNRC

MODELS	PH100-Si	PH-100Si ^{UV}	PH20-Ge
MAX AVERAGE POWER (ALONE / WITH OD2)	36 mW / 750 mW	2.8 mW / 30 mW	30 mW / 500 mW
EFFECTIVE APERTURE	10 mm Ø	10 mm Ø	5 mm Ø

MEASUREMENT CAPABILITY

Spectral Range	320 – 1100 nm	210 – 1080 nm	800 – 1650 nm
With OD1	400 – 1100 nm	400 – 1080 nm	900 – 1650 nm
With OD2	630 – 1100 nm	630 – 1080 nm	950 – 1650 nm
Maximum Measurable Power ^a	36 mW @ 1064 nm	4 mW @ 532 nm	30 mW @ 1064 nm
With OD1	300 mW @ 1064 nm	25 mW @ 532 nm	300 mW @ 1064 nm
With OD2	750 mW @ 1064 nm	30 mW @ 850 nm	500 mW @ 1064 nm
Noise Equivalent Power ^b	10 pW @ 980 nm	10 pW @ 850 nm	60 pW @ 1550 nm
Rise Time (nominal)	0.2 sec	0.2 sec	0.2 sec
Peak Sensitivity	0.58 A/W @ 980 nm	6.5 A/W @ 980 nm	0.98 A/W @ 1550 nm
Calibration Uncertainty	±6.5 % 320 - 399 nm ±2.5 % 400 - 899 nm ±3.5 % 900 - 999 nm ±5 % 1000 - 1049 nm ±7 % 1050 - 1100 nm –	±8 % 200 - 219 nm ±6.5 % 220 - 399 nm ±2.5 % 400 - 899 nm ±3.5 % 900 - 999 nm ±5 % 1000 - 1049 nm ±7 % 1050 - 1080 nm	±3.5 % 800 - 1650 nm – – – – –
Accuracy (with OD filters)	±5 % 400 - 1049 nm ±7 % 1050 - 1100 nm	±5 % 400 - 1049 nm ±7 % 1050 - 1080 nm	±5 %

DAMAGE THRESHOLDS

Maximum Average Power Density	100 W/cm ²	100 W/cm ²	100 W/cm ²
Saturation Level	30 mW/cm ² @ 1064 nm	65 mW/cm ² @ 532 nm	320 mW/cm ² @ 1064 nm

PHYSICAL CHARACTERISTICS

Effective Aperture	10 mm Ø	10 mm Ø	5 mm Ø
Dimensions	38.1Ø x 27.4D mm	38.1Ø x 27.4D mm	38.1Ø x 27.4D mm
Weight (head only)	130 g	130 g	130 g

ORDERING INFORMATION

Full Product Name	PH100-Si	PH100-Si ^{UV}	PH20-Ge
Product Number	200878	200879	200866
Full Product Name	PH100-Si-OD1	PD100-Si ^{UV} -OD1	PH20-Ge-OD1
Product Number	200880	200881	200874
Full Product Name	PH100-Si-OD2	PH100-Si ^{UV} -OD2	PH20-Ge-OD2
Product Number	200882	200883	200875

a. Maximum value depends on the monitor.

b. Nominal value. Depends on environmental electromagnetic interference.

Specifications are subject to change without notice